

# REFUGEES HEALTH WORKSHOP

- **REFUGEES MEN'S HEALTH & GENDER EQUALITY**
- DR. NIDHI YADAV
- ASSOCIATE PROFESSOR
- INTERNATIONAL INSTITUTE OF HEALTH MANAGEMENT  
RESEARCH (IIHMR), DELHI, INDIA

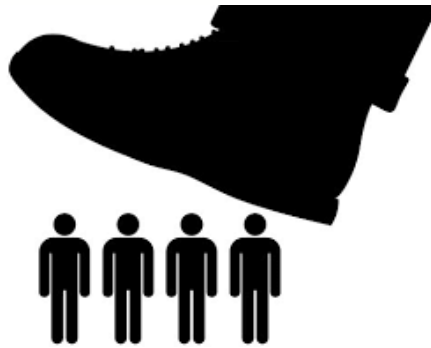


# 2023 THEME

---

HOPE AWAY  
FROM HOME

## NATURAL DISASTERS



## MIGRATION AND DISPLACEMENT ARE ON A RISE

- 153 million (2.9% of the global population) to 281 million (3.6% of the global population).
- In 2022 surpassed 100 million





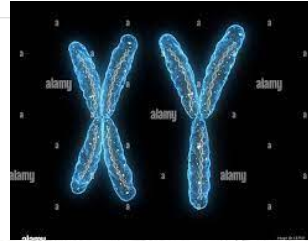
## GENDER & GENDER EQUALITY

---

- Sex: biological differences
- Gender: social differences
- Term “Sex” and “Gender” must be taken into account.

COVID PANDEMIC &  
DEATHS AMONG MEN

AIDS



VULNERABILITY

Hormones

BEHAVIOUR

STD  
(Sexually Transmitted Disease)

## MARS VS. VENUS

Men have higher vulnerability to diseases and injuries than women

- Hormones
- Behaviour
- Genetics
- HIV & STDs





## PLETHORA OF PROBLEMS

---

- Long, exhausting and risky journeys
- Inadequate access to food, water and sanitation
- Risk of communicable diseases and food- and waterborne diseases.
- Noncommunicable diseases

## COMPLEXITY OF CRISIS & PERCEPTION TOWARDS MALES

---



Prime reasons of immigration “insecurity and political instability, religious and ethnic tensions”

- traditionally focused humanitarian approach
- “immigration complex”
- fear of persecution and threats to lives and livelihood



## CONCLUSION

---

- “begin the dialogue”
- Let’s talk about men health, their cumulative vulnerabilities.
- Dignity of men- recognition
- Psychological distress
- Bring gender at the forefront





THANKS

---